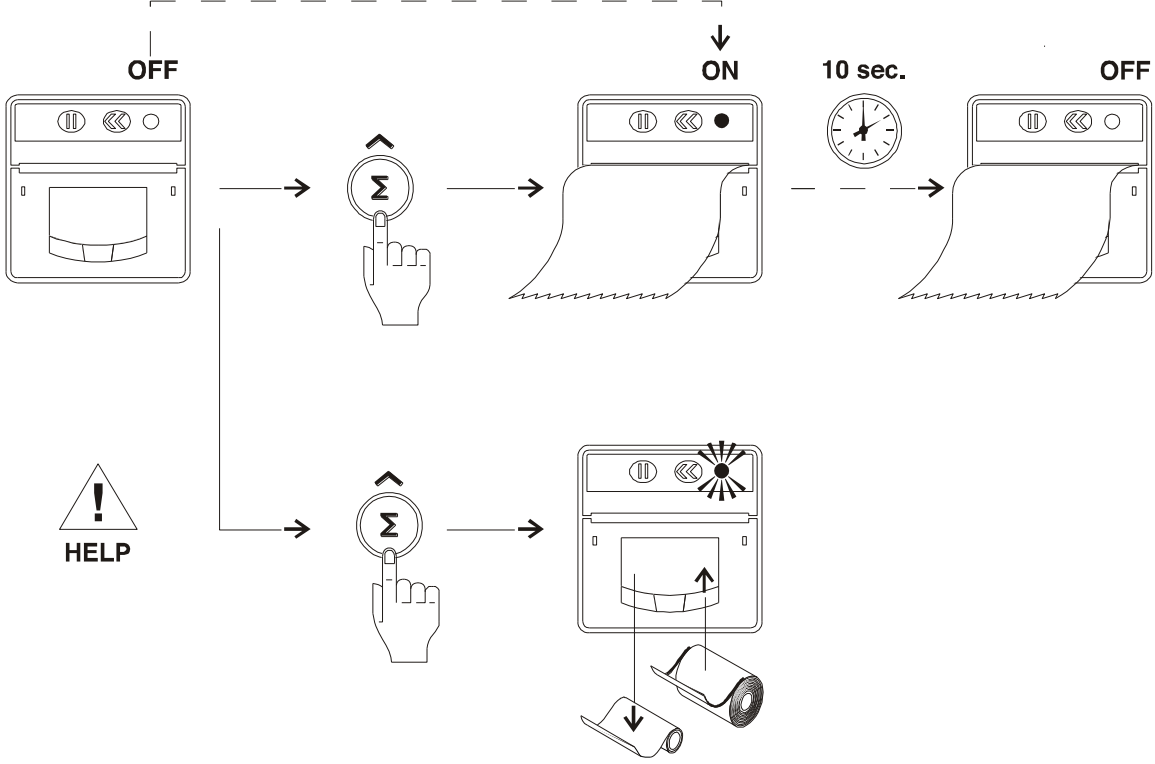


## **BRUSS BASIC-PRINTER**

BEDIENUNGSANLEITUNG  
OPERATIONAL MANUAL  
MANUEL D'OPÉRATION  
GEBRUIKERSHANDLEIDING  
MANUALE D'USO

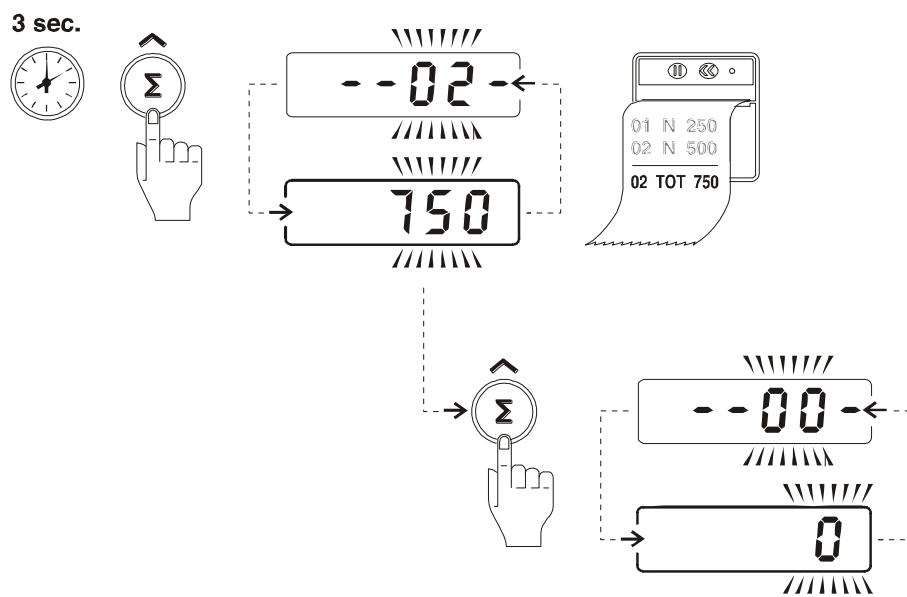
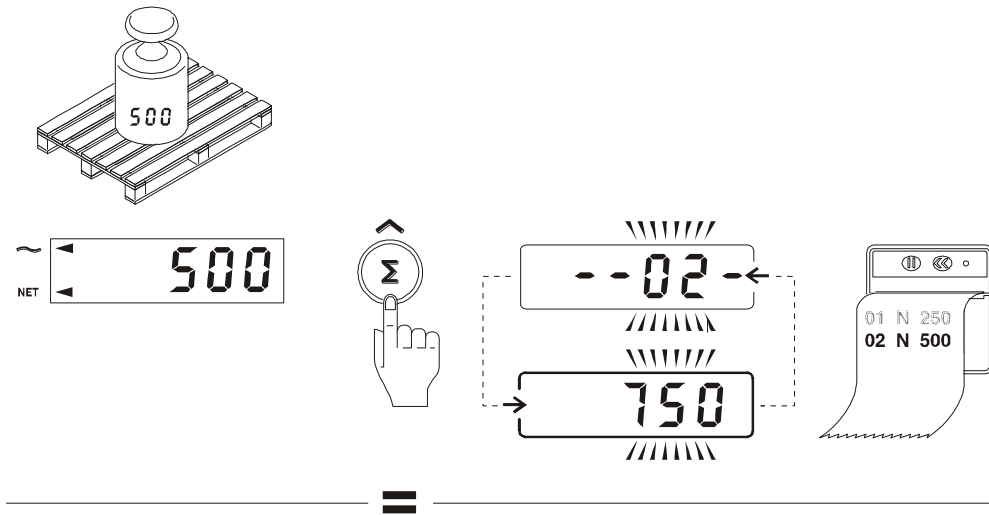
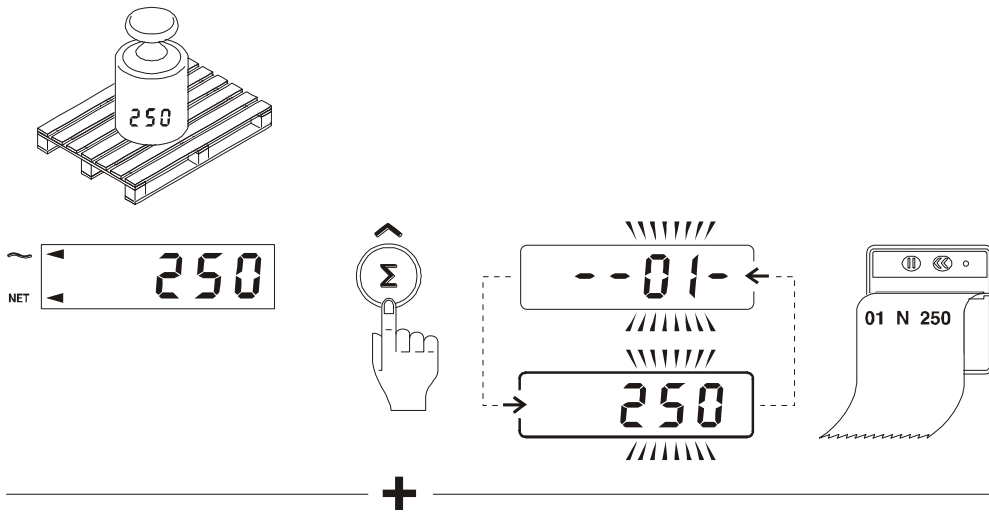
**10. Printer (option)**



EXAMPLE PRINTOUT:	01 B/G *	6.8 kg
	02 B/G	158.2 kg
	03 N	426.5 kg
	04 N	1200.0 kg
	04 PT	150.0 kg
	<hr/>	
	04 TOT	1791.5 kg

\* see page 5

# 11. Printout (option)



12. Paper change (Option)

